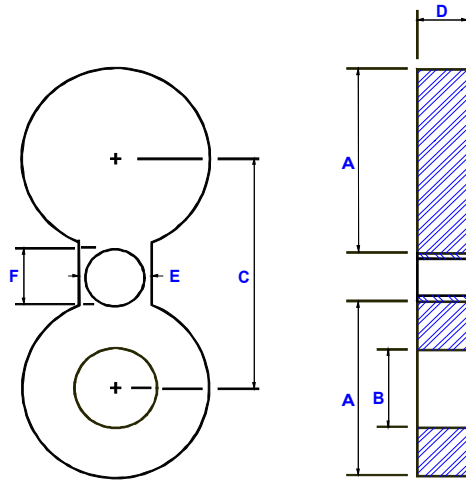


# IMPERIAL FLANGE & FITTING

## 600# SPECTACLE BLIND



PIPE SIZE	OUTER DIAMETER	BORE	CENTER TO CENTER	THICKNESS	WEB WIDTH	HOLE SIZE	PADDLE BLIND & SPACER HANDLE DIMENSIONS
	A	B	C	D	E	F	
1/2	2.00	.62	2.62	.25	1.50	.625	1 x 4
3/4	2.50	.81	3.25	.25	1.50	.750	1 x 4
1	2.75	1.05	3.50	.25	2.25	.750	1 x 4
1-1/4	3.12	1.43	3.87	.37	2.25	.750	1 x 4
1-1/2	3.62	1.68	4.50	.37	2.62	.875	1 x 4
2	4.25	2.16	5.00	.37	2.25	.750	1 x 4
2-1/2	5.00	2.64	5.87	.50	2.62	.875	1 x 4
3	5.75	3.26	6.62	.50	2.62	.875	1 x 4
3-1/2	6.25	3.76	7.25	.62	3.00	1.00	1 x 4
4	7.50	4.26	8.50	.62	3.00	1.00	1 x 4
5	9.37	5.30	10.50	.75	3.37	1.12	1 x 6
6	10.37	6.36	11.5	.87	3.37	1.12	1 x 6
8	12.50	8.33	13.75	1.12	3.75	1.25	1 x 6
10	15.62	10.42	17.00	1.37	4.12	1.37	1-1/2x6
12	17.87	12.39	19.25	1.62	4.12	1.37	1-1/2x6
14	19.25	13.62	20.75	1.75	4.50	1.50	1-1/2x6
16	22.12	15.62	23.75	2.00	4.87	1.62	1-1/2x6
18	24.00	17.62	25.75	2.12	5.25	1.75	1-1/2x6
20	26.75	19.56	28.50	2.50	5.25	1.75	1-1/2x6
24	31.00	23.50	33.00	2.87	6.00	2.00	1-1/2x6

**MATERIAL:** A36, A516-70, STAINLESS STEEL, CHROMOLY, HASTELLOY  
*OTHER MATERIALS AND STYLES AVAILABLE*

Manufactured per ASME B16.48

**Surface Finishes:**

**Mill** (Raw Stock)

**Serrated** (125Ra Machined Gasket)

**Paddle Blinds and Spacers Available**