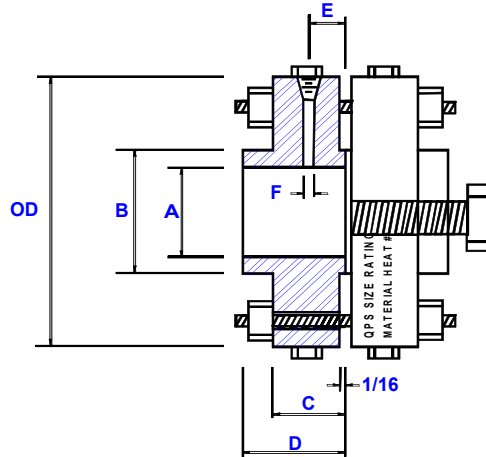


Imperial Flange & fitting Inc

300# RFS0 ORIFICE FLANGE UNION



PIPE SIZE	(A) BORE	OUTSIDE DIAMETER	HUB AT BASE	MINIMUM FLANGE THICKNESS	OVERALL LENGTH	CENTER OF TAP	PRESSURE TAP HOLE SIZE	DIAMETER OF RAISED FACE	DIAMETER OF BOLT CIRCLE	DIAMETER OF HOLES	NUMBER OF HOLES	SIZE OF STUDS	SIZE OF JACKSCREWS	APPROXIMATE WEIGHT
	A	O.D.	B	C	D	E	F							
1/2	.875	3.75	1.50	1.50	1.81	.937	.250	1.37	2.62	.562	4	1/2x4-3/4	1/2x4	9
3/4	1.093	4.62	1.87	1.50	1.87	.937	.250	1.68	3.25	.687	4	5/8x5-1/4	1/2x4	9
1	1.375	4.87	2.12	1.50	1.87	.937	.250	2.00	3.50	.687	4	5/8x 5-1/4	5/8x4	15
1-1/2	1.968	6.12	2.75	1.50	1.87	.937	.250	2.87	4.50	.812	4	3/4x5-1/4	5/8x4	19
2	2.437	6.50	3.31	1.50	1.93	.937	.375	3.62	5.00	.687	8	5/8x 5-1/4	5/8x4	23
2-1/2	2.937	7.50	3.93	1.50	2.00	.937	.375	4.12	5.87	.812	8	3/4x5-1/4	5/8x4	31
3	3.593	8.25	4.62	1.50	2.06	.937	.375	5.00	6.62	.812	8	3/4x5-1/4	3/4x4	39
4	4.593	10.00	5.75	1.50	2.12	.937	.500	6.18	7.87	.812	8	3/4x5-1/4	3/4x4	60
6	6.718	12.50	8.12	1.50	2.12	.937	.500	8.50	10.62	.875	12	3/4x5-1/4	3/4x4	100
8	8.718	15.00	10.25	1.62	2.43	.937	.500	10.62	13.00	1.00	12	7/8x5-3/4	3/4x4	134
10	10.875	17.50	12.62	1.87	2.62	.937	.500	12.75	15.25	1.12	16	1x6-1/2	3/4x4	196
12	12.875	20.50	14.75	2.00	2.87	.937	.500	15.00	17.75	1.25	16	1-1/8x7	3/4x4	281
14	14.156	23.00	16.75	2.12	3.00	.937	.500	16.25	20.25	1.25	20	1-1/8x7-1/2	1x5-1/2	380
16	16.156	25.50	19.00	2.25	3.25	.937	.500	18.50	22.50	1.37	20	1-1/4x8-1/2	1x5-1/2	530
18	18.187	28.00	21.00	2.37	3.50	.937	.500	21.00	24.75	1.37	24	1-1/4x8-1/4	1x5-1/2	691
20	20.218	30.50	23.12	2.50	3.75	.937	.500	23.00	27.00	1.37	24	1-1/4x8-1/2	1x5-1/2	781
24	24.250	36.00	27.62	2.75	4.18	.937	.500	27.25	32.00	1.62	24	1-1/2x9-1/2	1x5-1/2	1201

MATERIALS: A105 (C.S.) AND A182 (S.S.)

Other materials and schedules available

HARDWARE:

- Stud Bolts:** A193 Gr. B7 Steel
- Hex Nuts:** A194 Gr. 2H Steel
- Jackscrow:** C1018 Hardened Square Head Screws
- Pipe Plugs:** Hex Head, Forged Steel
- Ring Gaskets:** C4430 Non-Asbestos

Manufactured to meet

A.G.A Report #3-2

A.P.I 14.3

ASME SPECIFICATIONS

Orifice Plates sold separate