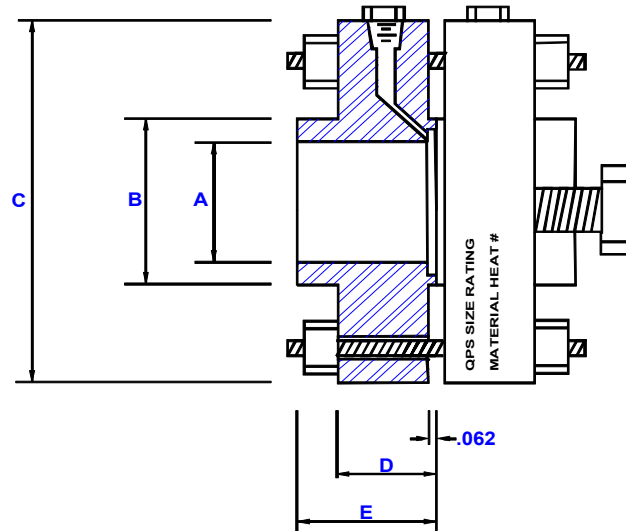


Imperial Flange & Fitting

150# RFSO CORNER TAP FLANGE UNIONS



PIPE SIZE	(A) BORE	HUB AT BASE	OUTER DIAMETER	(D) MINIMUM FLANGE THICKNESS	(E) OVERALL LENGTH	PIZOMETER HOLE	PRESSURE TAP SIZE (FNPT)	DIAMETER OF RAISED FACE	DIAMETER OF BOLT CIRCLE	DIAMETER OF HOLES	NUMBER OF HOLES	SIZE OF STUDS	SIZE OF JACKSCREWS	APPROXIMATE WEIGHT
	A	B	C	D	E									
1	1.375	1.937	4.25	.562	.687	.093	.125	2.00	3.12	.625	4	1/2 X 4-3/4	1/2 X 4	18
1-1/2	1.937	2.562	5.00	.687	.875	.093	.125	2.87	3.87	.625	4	1/2 X 4-3/4	1/2 X 4	25
2	2.437	3.062	6.00	.750	1.00	.125	.250	3.62	4.75	.750	4	5/8 X 5-1/4	1/2 X 4	28
2-1/2	2.937	3.562	7.00	.875	1.125	.125	.250	4.12	5.50	.750	4	5/8 X 5-1/4	1/2 X 4	30
3	3.562	4.250	7.50	.937	1.187	.125	.250	5.00	6.00	.750	4	5/8 X 5-1/4	1/2 X 4	41
4	4.562	5.312	9.00	.937	1.312	.125	.250	6.18	7.50	.750	8	5/8 X 5-1/4	1/2 X 4	64
6	6.750	7.562	11.00	1.00	1.562	.125	.250	8.50	9.50	.875	8	3/4 X 5-3/4	5/8 X 4	98
8	8.750	9.687	13.50	1.12	1.750	.187	.375	10.62	11.75	.875	8	3/4 X 5-3/4	5/8 X 4	134
10	10.875	12.00	16.00	1.18	1.937	.187	.375	12.75	14.25	1.00	12	7/8 X 5-3/4	5/8 X 4	184
12	12.875	14.37	19.00	1.25	2.187	.187	.375	15.00	17.00	1.00	12	7/8 X 5-3/4	5/8 X 4	283

MATERIALS: Domestic A105 (C.S.) AND A182 (S.S.)

Other materials, styles and schedules available

HARDWARE:

Stud Bolts: A193 Gr. B7 Steel

Hex Nuts: A194 Gr. 2H Steel

Jackscrew: C1018 Hardened Square Head Screws

Pipe Plugs: Hex Head, Forged Steel

**Manufactured to meet
ASME SPECIFICATIONS**

Orifice Plates sold separate